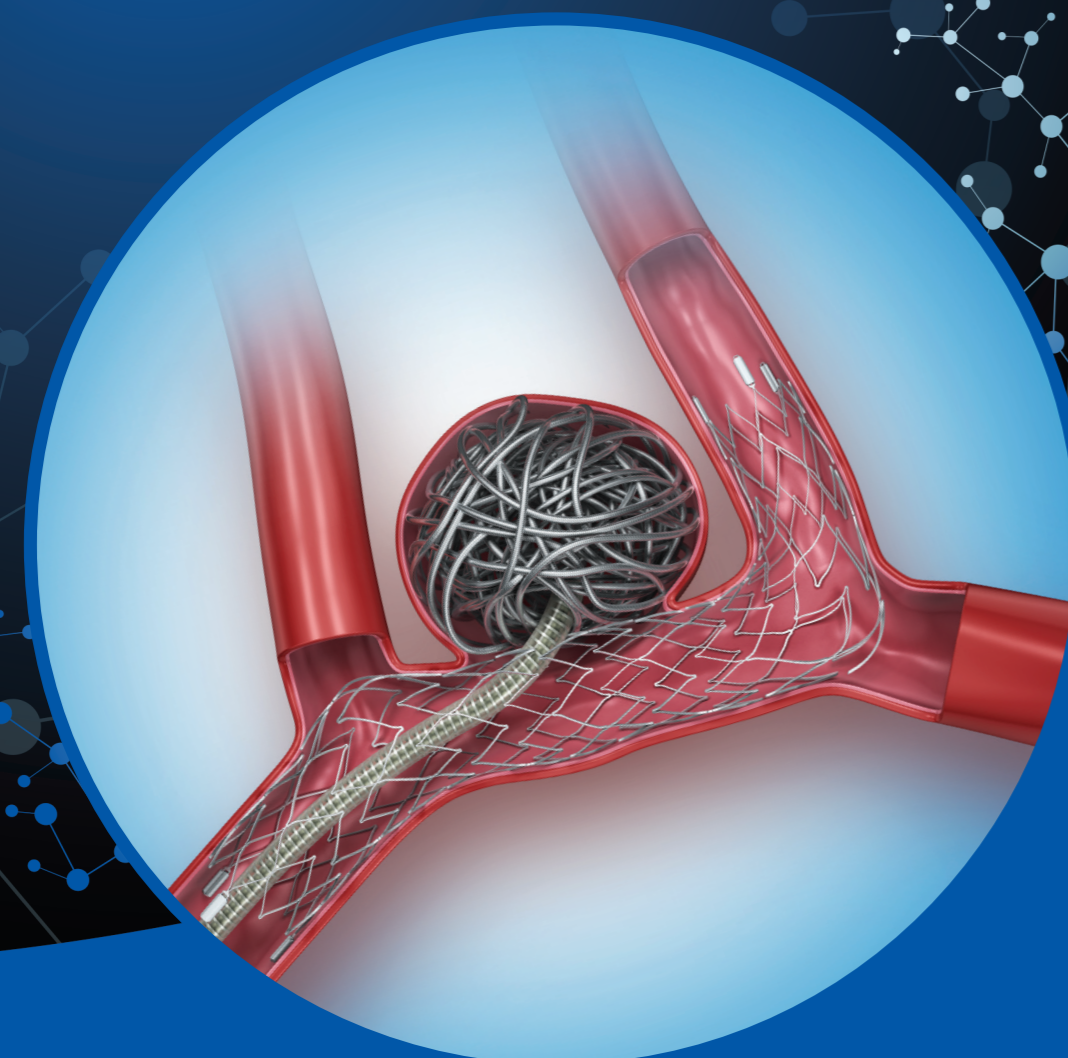


Neuroform Atlas™

STENT SYSTEM

Bending expectations of conformability and stability.

The Neuroform Atlas Stent System is purposefully designed to provide enhanced conformability, stability and ease of use with the goal of improving patient outcomes. The adaptive cell design provides the coil support and wall apposition needed to perform effective stent-assisted coiling procedures.



Product Number	Stent Diameter	Stent Length	Unconstrained Stent Diameter	Recommended Parent Vessel Diameter
M003EZAS30150	3.0mm	15mm	3.5mm	≥2.0 and <3.0mm
M003EZAS30210*	3.0mm	21mm	3.5mm	≥2.0 and <3.0mm
M003EZAS30240	3.0mm	24mm	3.5mm	≥2.0 and <3.0mm
M003EZAS40150	4.0mm	15mm	4.5mm	≥3.0 and <4.0mm
M003EZAS40240	4.0mm	24mm	4.5mm	≥3.0 and <4.0mm
M003EZAS40300*	4.0mm	30mm	4.5mm	≥3.0 and <4.0mm
M003EZAS45210	4.5mm	21mm	5.0mm	≥4.0 and ≤4.5mm
M003EZAS45300	4.5mm	30mm	5.0mm	≥4.0 and ≤4.5mm

All stent sizes are compatible with Stryker Neurovascular 0.0165-0.017in (0.42-0.43mm) ID microcatheters, excluding Tracker™ 17 Microcatheter. The stents above are available without a distal delivery wire tip.
*These stent sizes will be available starting January, 2016.

Neuroform Atlas™

STENT SYSTEM

See package insert for complete indications, contraindications, warnings and instructions for use.

INTENDED USE/INDICATIONS FOR USE

The Neuroform Atlas™ Stent System is intended to be used with occlusive devices in the treatment of intracranial aneurysms.

THIS DOCUMENT IS INTENDED SOLELY FOR THE USE OF HEALTHCARE PROFESSIONALS.

A physician must always rely on his or her own professional clinical judgment when deciding whether to use a particular product when treating a particular patient. Stryker does not dispense medical advice and recommends that physicians be trained in the use of any particular product before using it in a procedure. The information presented is intended to demonstrate the breadth of Stryker product offerings. A physician must always refer to the package insert, product label and/or instructions for use before using any Stryker product. Products may not be available in all markets because product availability is subject to the regulatory and/or medical practices in individual markets. Please contact your Stryker representative if you have questions about the availability of Stryker products in your area. The Stryker products listed above are CE marked according to the Medical Device Directive 93/42/EEC.

Bench test results. n=1. Bench test results may not necessarily be indicative of clinical performance. Testing performed by Stryker Neurovascular. Data are on file at Stryker Neurovascular and will be made available upon request. All photos and illustrations owned by Stryker Neurovascular. Sample images represent expected performance of Neuroform Atlas Stent.

Stryker Corporation or its divisions or other corporate affiliated entities own, use or have applied for the following trademarks or service marks: Excelsior, Neuroform Atlas, Segmental, Target, Tracker, XT-17. All other trademarks are trademarks of their respective owners or holders.



RAQA Manager
Stryker France S.A.S.
ZAC-Avenue de Satolas Green
69330 Pusignan
France

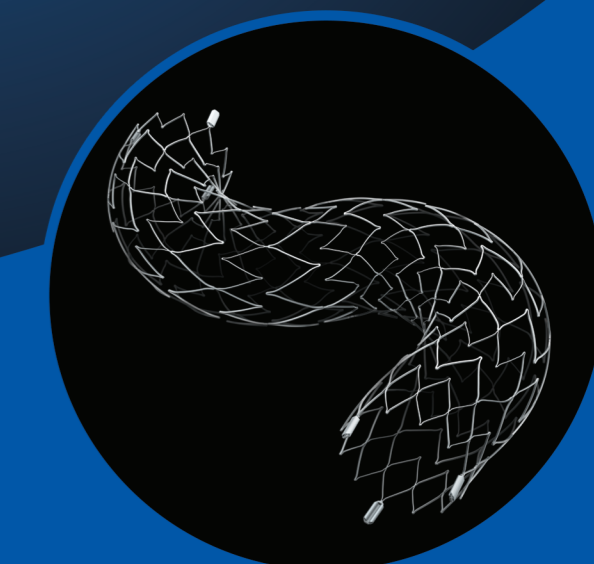


Stryker Neurovascular
47900 Bayside Parkway
Fremont, CA 94538

strykerneurovascular.com
Date of Release : SEP/2015
EX_EN_JL



Bending expectations of conformability and stability.



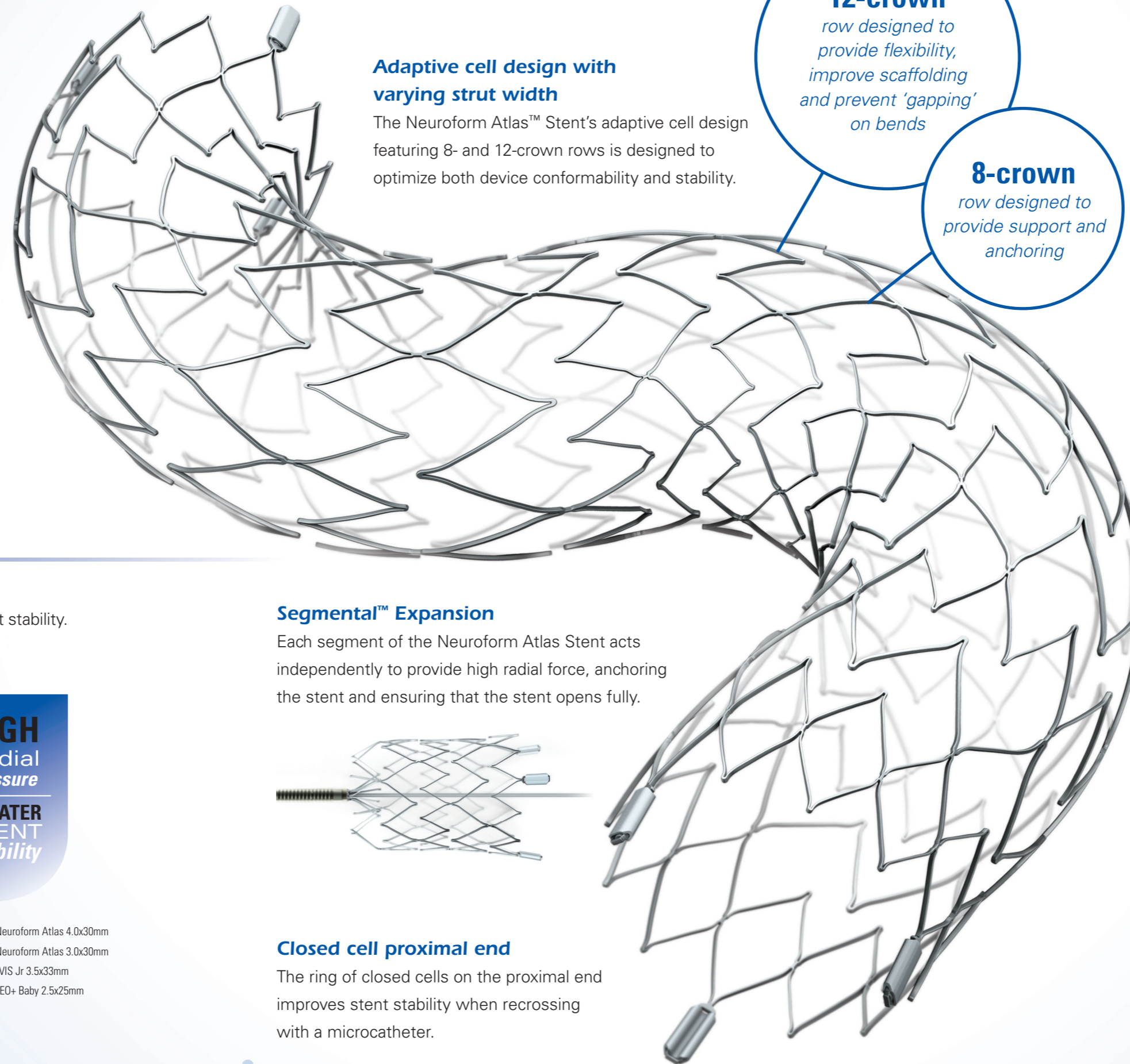
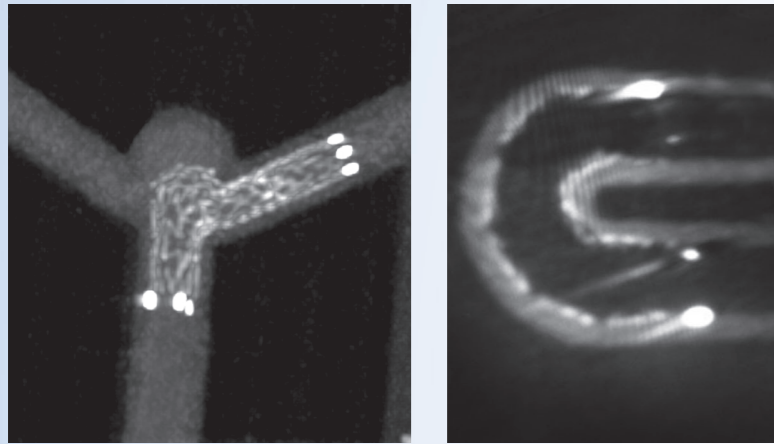
Neuroform Atlas™

STENT SYSTEM

CONFORMABILITY

Wall apposition

The adaptive cell structure is designed to enhance stent opening and conformability in bifurcations and tight curves.



Adaptive cell design with varying strut width

The Neuroform Atlas™ Stent's adaptive cell design featuring 8- and 12-crown rows is designed to optimize both device conformability and stability.

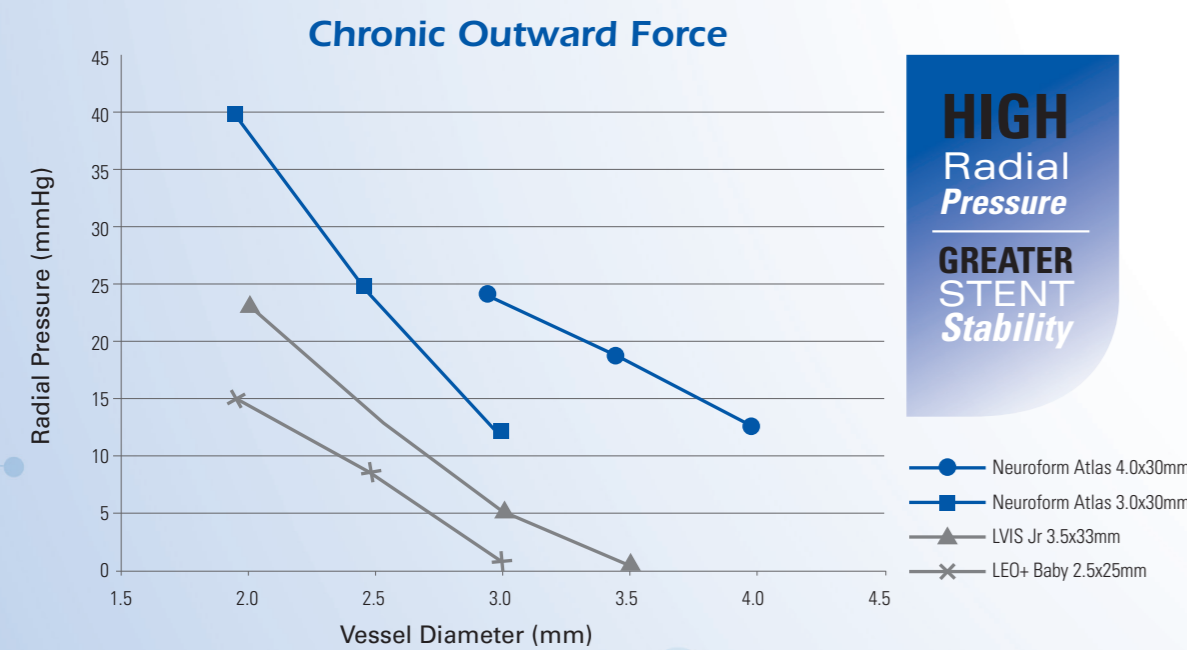
12-crown
row designed to provide flexibility, improve scaffolding and prevent 'gapping' on bends

8-crown
row designed to provide support and anchoring

STABILITY

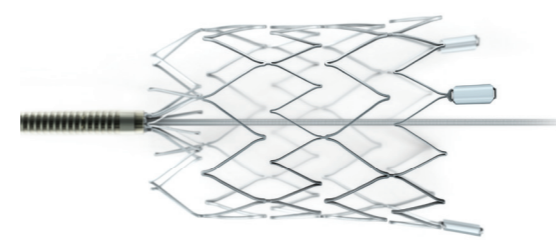
Superior radial force

The high radial pressure of the Neuroform Atlas™ Stent leads to greater stent stability.



Segmental™ Expansion

Each segment of the Neuroform Atlas Stent acts independently to provide high radial force, anchoring the stent and ensuring that the stent opens fully.



Closed cell proximal end

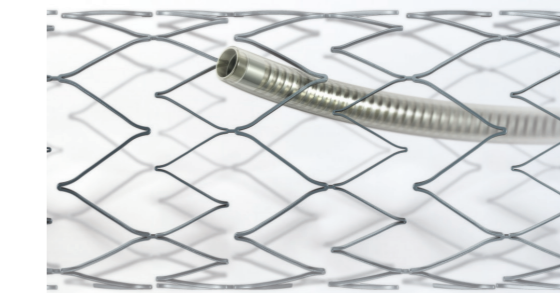
The ring of closed cells on the proximal end improves stent stability when recrossing with a microcatheter.

EASE OF USE

Microcatheter compatibility

All sizes of the Neuroform Atlas™ Stent are deliverable down coiling microcatheters, such as Excelsior™ SL-10™ Microcatheter*.

With Neuroform Atlas Stents and the Excelsior family of microcatheters, the same 2-tip microcatheter can be used to deliver both stents and coils.

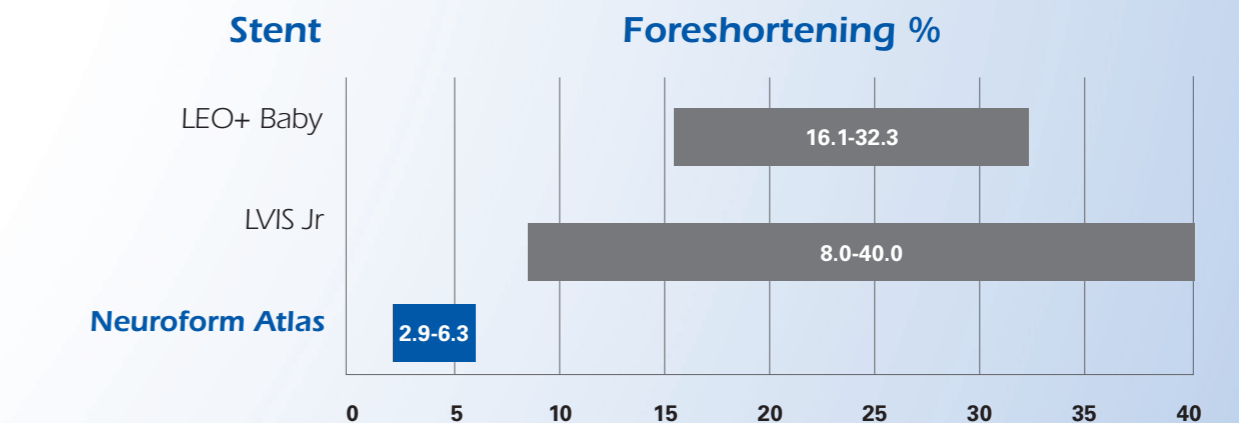


Predictable recrossability

The Neuroform Atlas Stent balances both consistent neck coverage and recrossability. The adaptive cell design facilitates recrossability by 1.7F tip microcatheters while providing a scaffold for the entire line of Target™ Detachable Coils.

Low foreshortening

The very low foreshortening of the Neuroform Atlas Stent leads to higher deployment accuracy.



*Stryker Neurovascular 0.0165-0.017in ID microcatheters, excluding Tracker™ 17.